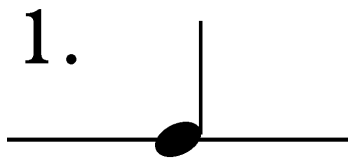
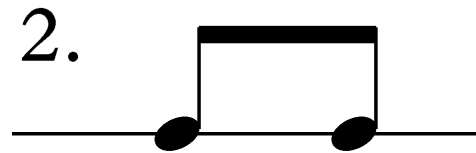


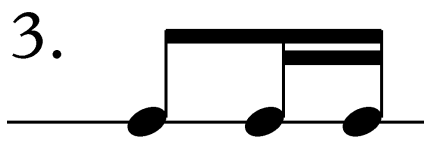
# Introduction to Basic Sight Rhythms



Blue



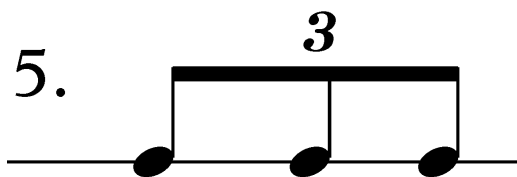
Jel - lo



Run Po-ny



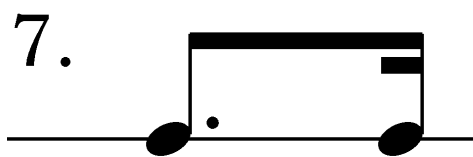
Ten-nis Shoe



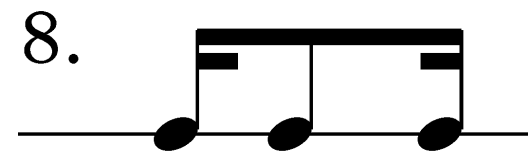
Straw-ber - ry



Mo-tor-cy-cle



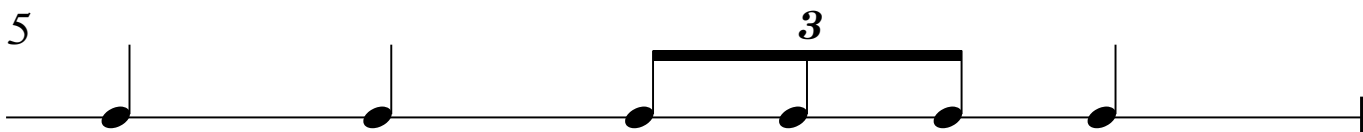
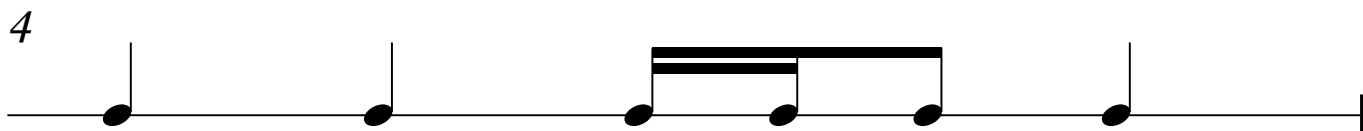
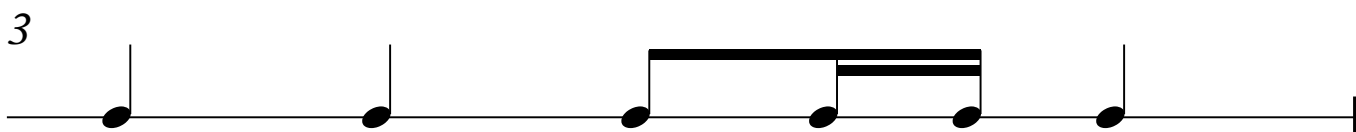
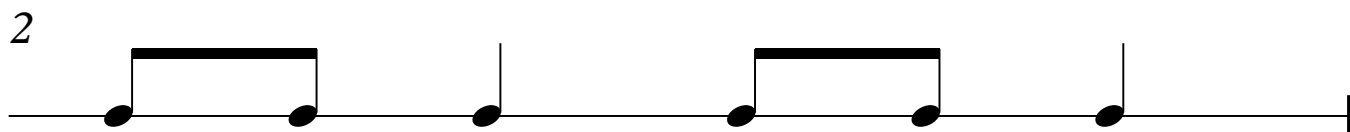
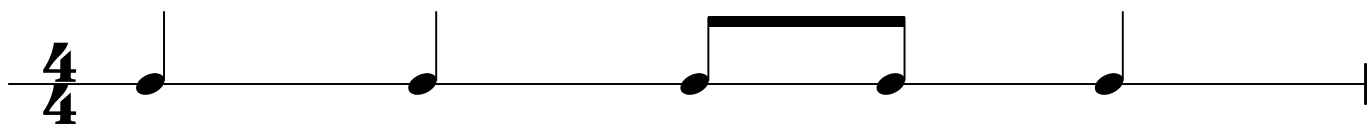
Daais - y



Ti- ta - ti

# Rhythm Puzzles - Speed Sheet 1

Write out the sight rhythm "*word helpers*". Then *say it*, *clap it*, and *play it*.



Rhythm Puzzles - Speed Sheet 1

2

6

A musical staff with a single eighth note, a quarter note, a beamed eighth-note pair, and another quarter note. Below the staff is a blank line for writing.

7

A musical staff with a quarter note, a triplet of eighth notes, a quarter note, and a beamed eighth-note pair. Below the staff is a blank line for writing.

8

A musical staff with a beamed eighth-note pair, a quarter note, a beamed eighth-note pair, a quarter note, a quarter note, a quarter note, a beamed eighth-note pair, and a quarter note. Below the staff is a blank line for writing.

9

A musical staff with a beamed eighth-note pair, a quarter note, a quarter note, a quarter note, a quarter note, a quarter note, a triplet of eighth notes, and a quarter note. Below the staff is a blank line for writing.

10

A musical staff with a beamed eighth-note pair, a quarter note, a beamed eighth-note pair, a quarter note, a quarter note, a quarter note, a quarter note, a beamed eighth-note pair, and a quarter note. Below the staff is a blank line for writing.

Time \_\_\_\_\_

Name \_\_\_\_\_

## Rhythm Puzzles - Speed Sheet 2

Write out the sight rhythm "*word helpers*". Then *say it*, *clap it*, and *play it*.

**4/4**

\_\_\_\_\_

**2**

\_\_\_\_\_

**3**

\_\_\_\_\_

**4**

\_\_\_\_\_

**5**

\_\_\_\_\_

Rhythm Puzzles - Speed Sheet 2

2

6

3

7

8

3

9

10

Time \_\_\_\_\_

Name \_\_\_\_\_

# Rhythm Puzzles - Speed Sheet 3

Write out the sight rhythm "word helpers". Then say it, clap it, and play it.

**4/4**

---

**2** **3**

---

**3** **3**

---

**4** **3**

---

**5**

---

Rhythm Puzzles - Speed Sheet 3

2

6

---

7

---

8

---

9

---

10

---

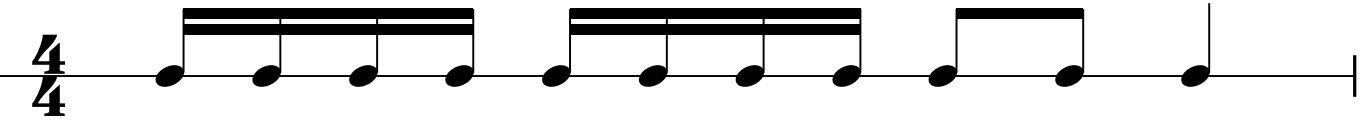
Time \_\_\_\_\_

Name \_\_\_\_\_

# Rhythm Puzzles - Speed Sheet 4

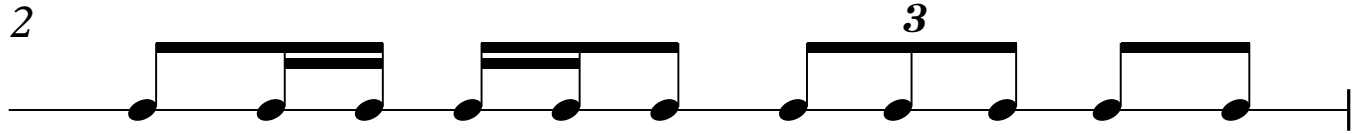
Write out the sight rhythm "word helpers". Then say it, clap it, and play it.

$\frac{4}{4}$



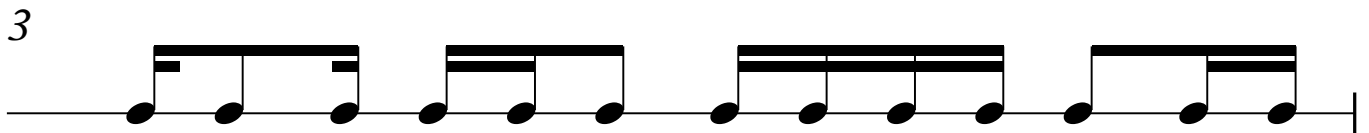
---

2



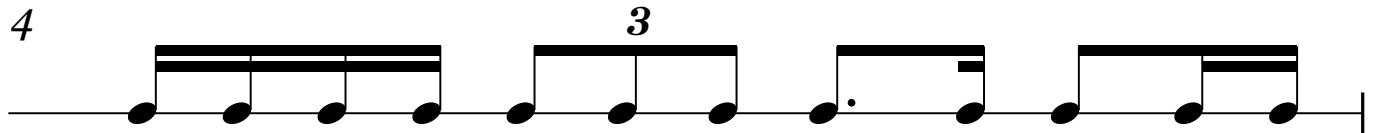
---

3



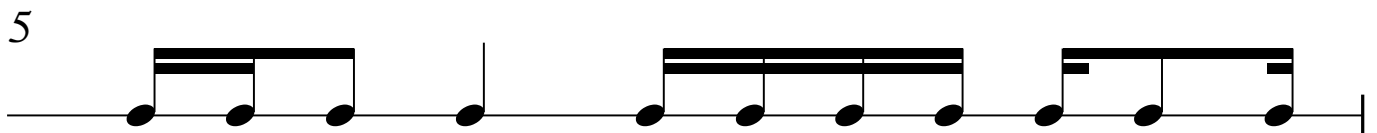
---

4



---

5



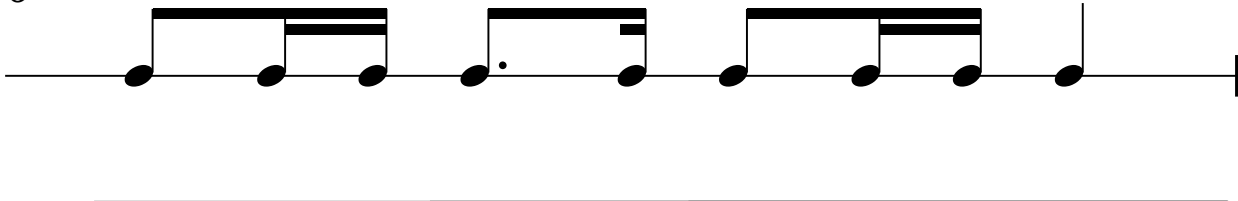
---



Rhythm Puzzles - Speed Sheet 4

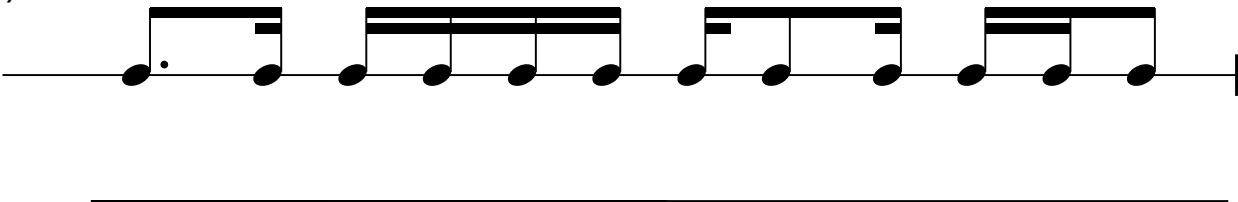
2

6



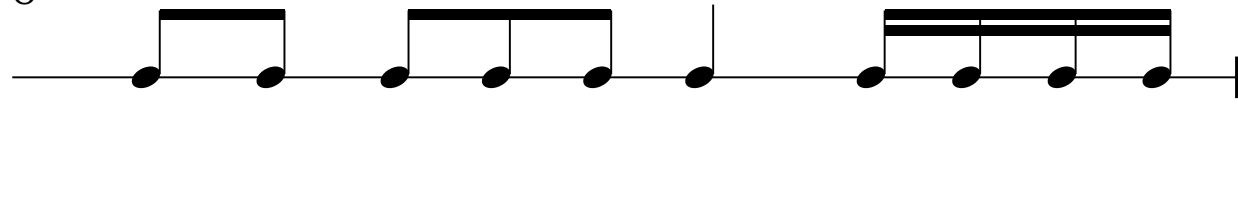
A musical staff with a treble clef and a single line. The notation consists of four groups of notes: 1) a quarter note, a beamed eighth note, and a quarter note; 2) a dotted quarter note and an eighth note; 3) a quarter note, a beamed eighth note, and a quarter note; 4) a quarter note. A horizontal line is drawn below the staff.

7



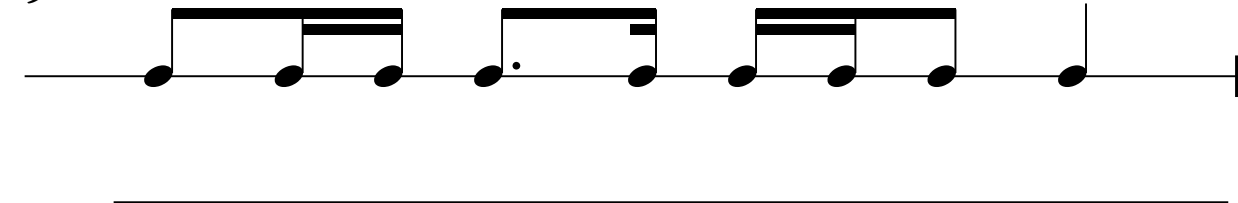
A musical staff with a treble clef and a single line. The notation consists of four groups of notes: 1) a dotted quarter note and an eighth note; 2) a quarter note, a beamed eighth note, and a quarter note; 3) a quarter note, a beamed eighth note, and a quarter note; 4) a quarter note, a beamed eighth note, and a quarter note. A horizontal line is drawn below the staff.

8



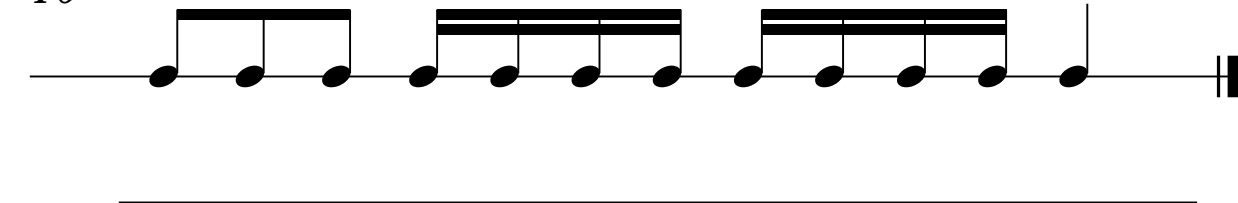
A musical staff with a treble clef and a single line. The notation consists of four groups of notes: 1) a quarter note and a quarter note; 2) a quarter note, a beamed eighth note, and a quarter note, with a '3' above the beamed eighth note; 3) a quarter note; 4) a quarter note, a beamed eighth note, and a quarter note. A horizontal line is drawn below the staff.

9



A musical staff with a treble clef and a single line. The notation consists of four groups of notes: 1) a quarter note, a beamed eighth note, and a quarter note; 2) a quarter note, a dotted quarter note, and an eighth note; 3) a quarter note, a beamed eighth note, and a quarter note; 4) a quarter note. A horizontal line is drawn below the staff.

10



A musical staff with a treble clef and a single line. The notation consists of four groups of notes: 1) a quarter note, a beamed eighth note, and a quarter note, with a '3' above the beamed eighth note; 2) a quarter note, a beamed eighth note, and a quarter note; 3) a quarter note, a beamed eighth note, and a quarter note; 4) a quarter note. A horizontal line is drawn below the staff.

Time \_\_\_\_\_

Name \_\_\_\_\_

# Rhythm Puzzles - Speed Sheet 5

Write out the sight rhythm "word helpers". Then *say it*, *clap it*, and *play it*.

$\frac{4}{4}$

\_\_\_\_\_

2

\_\_\_\_\_

3

\_\_\_\_\_

4

\_\_\_\_\_

5

\_\_\_\_\_

Rhythm Puzzles - Speed Sheet 5

2

6

---

7

---

8

---

9

---

10

---

Name \_\_\_\_\_

# Compose your own "Rhythm Puzzles"

Compose your own sight rhythms and write out the "*word helpers*".  
Then *say it, clap it, and play it.*

**4**  
**4**

2

3

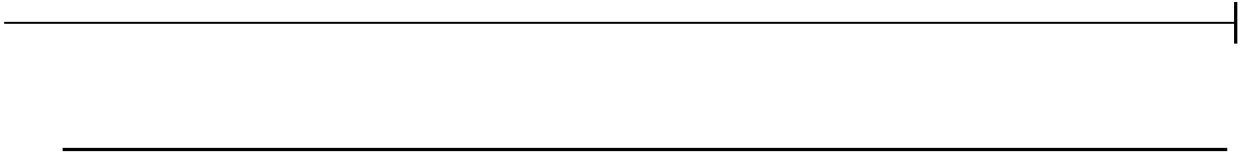
4

5

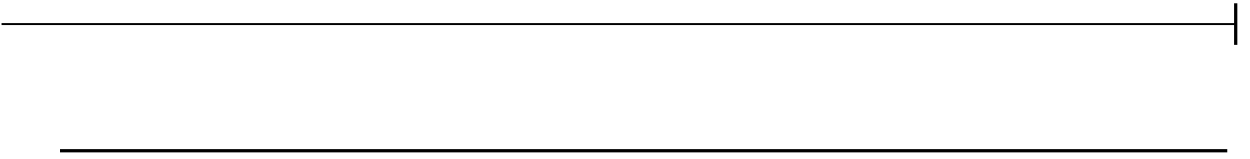
Compose your own "Rhythm Puzzles"

2

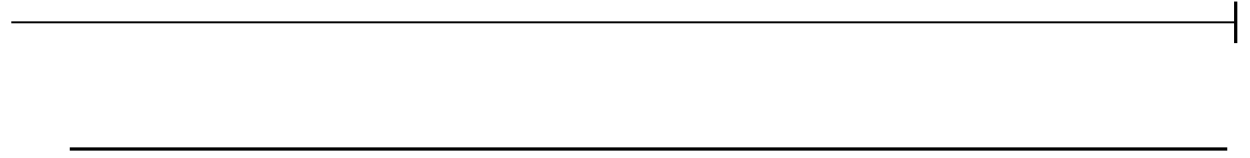
6



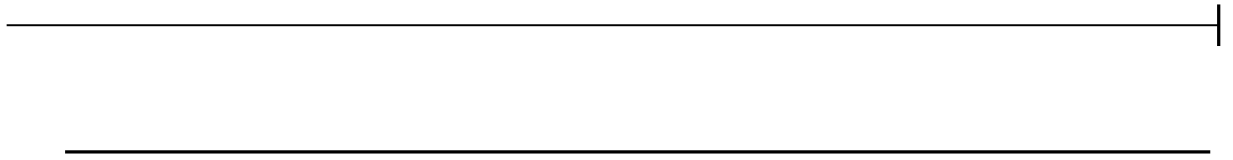
7



8



9



10

